

DEPARTMENT OF THE ARMY TECHNICAL MANUAL

ORGANIZATIONAL MAINTENANCE REPAIR PARTS AND SPECIAL TOOLS LISTS  
DETECTING SETS, INFRARED AN/AAS-14A AND AN/AAS-14B;  
TRANSMITTER RADIO AN/ART-41A; AND CABLE ASSEMBLY SETS, ELECTRICAL MX-7268/AAS-14A AND MX-7270/UAS-4A

Headquarters, Department of the Army, Washington, D. C.  
8 September 1970

Current as of 1 July 1970

	Paragraph	Page
SECTION I. INTRODUCTION		
Scope . . . . .	1	3
General . . . . .	2	3
Explanation of columns . . . . .	3	3
Special information . . . . .	4	5
Location of repair parts . . . . .	5	5
Federal supply codes for manufacturers . . . . .	6	5
deporting of equipment publication improvements . . . . .	7	5
II. PRESCRIBED LOAD ALLOWANCE		
AN/AAS-14A and AN/AAS-14B group . . . . .		6
An/USA-23 and AN/USA-23A group . . . . .		7
OA-7827/AAS-14A, AM-4464/AAS-14A, AM-4467/AAS-14A, AM-4468/AAS-14A, HD-723/AAS-14A, and MK-898/AAS-14A, group . . . . .		8
CV-2052/AAS-14A group . . . . .		9
III. REPAIR PARTS FOR ORGANIZATIONAL MAINTENANCE		
AN/AAS-14A and AN/AAS-14B group . . . . .		10
AN/USA-23 and AN/USA-23A group . . . . .		12

\*This manual supersedes TM11-5850-218-20P, 20 June 1967.

	OA-7827/AAS-14A, AM-4464/AAS-14A, AM-4467/AAS-14A, AM-4468/AAS-14A, HD-723/AAS-14A, and MK-898/AAS-14A, group . . . . .	14
	CV-2052/AAS-14A group . . . . .	16
SECTION IV.	SPECIAL TOOLS, TEST, AND SUPPORT EQUIPMENT FOR ORGANIZATIONAL MAINTENANCE	
	AN/AAS-14A and AN/AAS-14B group . . . . .	17
V.	FEDERAL STOCK NUMBER CROSS- REFERENCE TO INDEX NUMBER	
	AN/AAS-14A and AN/AAS-14B group . . . . .	18
	AN/USA-23 and AN/USA-23A group . . . . .	18
	OA-7827/AAS-14A, AM-4464/AAS-14A, AM-4467/AAS-14A, AM-4468/AAS-14A, HD-723/AAS-14A, and MK-898/AAS-14A group . . . . .	18
	CV-2052/AAS-14A group . . . . .	18
VI.	FIGURE AND ITEM NUMBER CROSS- REFERENCE TO INDEX NUMBER	
	AN/AAS-14A and AN/AAS-14B group . . . . .	19
	AN/USA-23 and AN/USA-23A group . . . . .	19
	OA-7827/AAS-14A, AM-4464/AAS-14A, AM-4467/AAS-14A, AM-4468/AAS-14A, HD-723/AAS-14A, and MK-898/AAS-14A group . . . . .	19
	CV-2052/AAS-14A group . . . . .	19
VII.	REFERENCE DESIGNATION CROSS- REFERENCE TO INDEX NUMBER	
	AN/AAS-14A and AN/AAS-14B group . . . . .	20
	AN/USA-23 and AN/USA-23A group . . . . .	20
	OA-7827/AAS-14A, AM-4464/AAS-14A, AM-4467/AAS-14A, AM-4468/AAS-14A, HD-723/AAS-14A, and MK-898/AAS-14A group . . . . .	20
	CV-2052/AAS-14A group . . . . .	21

# SECTION I INTRODUCTION

## 1. Scope

This manual lists repair parts and special tools required for the performance of organizational maintenance of the AN/AS-14A and AN/AAS-14B.

## 2. General

The Repair Parts and Special Tools List is divided into the following sections.

**a. Prescribed Load Allowance (PLA) - Section II.** A composite listing of the repair parts, special tools, test and support equipment having quantitative allowances for initial stockage at the organizational level.

**b. Repair Parts - Section III.** A list of repair parts authorized for the performance of maintenance at the organizational level.

**c. Special Tools, Test and Support Equipment - Section IV.** A list of special tools, test and support equipment authorized for the performance of maintenance at the organizational level.

### N O T E

All indexes noted below are cross-referenced to index numbers. The index numbers appear in ascending sequence in column 1 of the repair parts list. The index number for the particular item will be the same for the item in all sections of this publication.

**d. Federal Stock Number Cross-Reference to Index Number - Section V.** A list of Federal stock numbers in ascending numerical sequence cross-referenced to index (sequence) numbers.

**e. Figure and Item Number Cross-Reference to Index Number - Section VI.** A list of illustration figure numbers in numerical sequence cross-referenced to item number (reference designation) and index numbers.

**f. Reference Designation Cross-Reference to Index Number - Section VII.** A list of reference designations (or item numbers) to index numbers.

## 3. Explanation of Columns

The following provides an explanation of columns in the tabular lists:

**a. Source, Maintenance, and Recoverability Codes (SMR), Column 1.**

(1) Source code indicates the selection status and source for the listed item. Source codes are -

<b>Code</b>	<b>Explanation</b>
P	- Repair parts which <i>are</i> stocked in or supplied from the GSA/DSA, or Army supply system, and authorized for use at indicated maintenance categories.
P2	- Repair parts which are procured and stocked for insurance purposes because the combat or military essentiality of the end item dictates that a minimum quantity be available in the supply system.
P9	- Assigned to items which are NSA design controlled: unique repair parts, special tools, test, measuring and diagnostic equipment, which are stocked and supplied by the Army COMSEC logistic system, and which are not subject to the provisions of AR 380-41.
PIO	- Assigned to items which are NSA design controlled: special tools, test, measuring and diagnostic equipment for COMSEC support, which are accountable under the provisions of AR 380-41, and which are stocked and supplied by the Army COMSEC logistic system.
M	- Repair parts which are not procured or stocked, but are to be manufactured in indicated maintenance levels.
A	- Assemblies which are not procured or stocked as such, but are made up of two or more units. Such component units carry individual stock numbers and descriptions, are procured and stocked separately, and can be assembled to form the required assembly at indicated maintenance categories.
X	- Parts and assemblies which are not procured or stocked and the mortality of which normally is below that of the applicable end item or component. The failure of such part or assembly should result in retirement of the end item from the supply system.

<i>Code</i>	<i>Explanation</i>
X1	- Repair parts which are not procured or stocked. The requirement for such items will be filled by use of the next higher assembly or component.
x 2	- Repair parts which are not stocked. The indicated maintenance category requiring such repair parts will attempt to obtain same through cannibalization. Where such repair parts are not obtainable through cannibalization, requirements will be requisitioned, with accompanying justification, through normal supply channels.
G	- Major assemblies that are procured with PEMA funds for initial issue only as exchange assemblies at DSU and GSU level. These assemblies will not be stocked above DS and GS level or returned to depot supply level.

(2) Maintenance code indicates the lowest category of maintenance authorized to install the listed item. The maintenance level codes are -

<i>Code</i>	<i>Explanation</i>
C . . . . .	Operator/crew
O . . . . .	Organizational maintenance

(3) Recoverability code indicates whether un-serviceable items should be returned for recovery or salvage. Items not coded are expendable. Recoverability codes are -

<i>Code</i>	<i>Explanation</i>
R	- Repair parts and assemblies that are economically repairable at DSU and GSU activities and are normally furnished by supply on an exchange basis.
S	- Repair parts and assemblies which are economically repairable at DSU and GSU activities and which normally are furnished by supply on an exchange basis. When items are determined by a GSU to be uneconomically repairable, they will be evacuated to a depot for evaluation and analysis before final disposition
T	- High dollar value recoverable repair parts which are subject to special handling are issued on an exchange basis. Such repair parts normally are repaired or overhauled at depot maintenance activities.
U	- Repair parts specifically selected for salvage by reclamation units because of precious metal content, critical materials,

<i>Code</i>	<i>Explanation</i>
	or high dollar value reusable casings or castings.

**b. Federal Stock Number, Column 2.** This column indicates the Federal stock number assigned to the item and will be used for requisitioning purposes.

**c. Description, Column 3.** This column indicates the Federal item name and any additional description of the item required. A part number or other reference number is followed by the applicable five-digit Federal supply code for manufacturers in parentheses.

**d. Unit of Measure, Column 4.** A two-character alphabetic abbreviation indicating the amount or quantity of the item upon which the allowances are based; e.g., ft, ea, pr, etc.

**e. Quantity Incorporated in Unit, Column 5.** This column indicates the quantity of the item used in the AN/AAS-14A and AN/AAS-14B. A "V" appearing in this column in lieu of a quantity indicates that a definite quantity cannot be indicated (e.g., shims, spacers, etc.).

**f. 15-day Organizational Maintenance Allowances, Column 3 of Section II and Column, 6 of Sections III and IV.**

(1) The allowance columns are divided into four subcolumns. Indicated in each subcolumn opposite the first appearance of each item is the total quantity of items authorized for the number of equipments supported. Subsequent appearances of the same item will have the letters "REF" in the allowance columns. Items authorized for use as required but not for initial stockage are identified with an asterisk in the allowance column.

(2) The quantitative allowances for organizational level of maintenance represents one initial prescribed load for a 15-day period for the number of equipments supported. Units and organizations authorized additional prescribed loads will multiply the number of prescribed loads authorized by the quantity of repair parts reflected in the density column applicable to the number of items supported to obtain the total quantity of repair parts authorized.

(3) Organizational units providing maintenance for more than 100 of these equipments shall determine the total quantity of parts required by converting the equipment quantity to a decimal factor by placing a decimal point before the next to last digit of the number to indicate hundredths, and

multiplying the decimal factor by the parts quantity authorized in the 50-100 allowance column. Example, authorized allowance for 51-100 equipments is 40; for 150 equipments multiply 40 by 1.50 or 60 parts required.

(4) Subsequent changes to allowances will be limited as follows: No change in the range of items is authorized. If additional items are considered necessary, recommendation should be forwarded to Commanding General, U.S. Army Electronics Command, ATTN: AMSEL-ME-NMP-RS, Fort Monmouth, N.J., 07703, for exception or revision to the allowance list. Revisions to the range of items authorized will be made by the USA ECOM National Maintenance Point based upon engineering experience, demand data, or TAERS information.

g. Illustration, Column 7. This column is divided as follows:

(1) Figure number, column 7a. Indicates the figure number of the illustration in which the item is shown.

(2) Item number, column 7b. Indicates the callout number used to reference the item in the illustration.

#### 4. Special Information

a. Identification of the usable on codes included in column 2 of section II and column 3 of sections III and IV of this publication are -

Code	<i>Used on</i>
<b>GROUP I</b>	
1.....	AN/AAS-14A
2.....	AN/AAS-14B
<b>GROUP II</b>	
1.....	/USA-23
2.....	/USA-23A

b. Repair parts mortality is computed from failure rates derived from experience factors with the individual parts in a variety of equipments. Variations in the specific application and periods of use of electronics equipment, the fragility of electronic piece parts, plus intangible material and quality factors intrinsic to the manufacture of electronic parts, do not permit mortality to be based on hours of end item use. However, long periods of continuous use under adverse conditions are likely to increase repair parts mortality.

c. The following publication pertains to the

AN/AAS-14A and AN /AAS-1 and its components:

(C) TM II-5850-218-12 Organizational Maintenance Manual: Detect-

AAS-14A;Transmitter,  
Radio AN/ART-41A

**(Airborne Components of Surveillance System, Infrared AN/UAS-4A); and Cable Assembly Sets, Electrical MX-7268/AAS-14A and MX-7270/UAS-4A (U) .**

#### 5. Location of Repair Parts

a. This manual contains three cross-reference indexes (sec. V, VI, and VII) to be used to locate a repair part when either the Federal stock number, reference number (manufacturer's part number), figure number, or reference designation is known. The first column in each cross-reference index is prepared, as applicable, in numerical or alpha-numerical sequence. The last column of each cross-reference index lists the index number assigned to the part.

b. Refer to the appropriate cross-reference index (para 2d, e, and f) and note the index number in the last column; then refer to the repair parts list to locate the index number which is listed in ascending order in column 1 of the repair parts list.

#### 6. Federal Supply Codes for Manufacturers

<i>Code</i>	<i>Manufacturers</i>
<b>72619</b> .....	<b>Dialight Corp.</b>
<b>81349</b> .....	<b>Military Specifications</b>
<b>96906</b> .....	<b>Military Standards</b>
<b>99017</b> .....	<b>Protective Closures Co. Inc.</b>
<b>99592</b> .....	<b>HRB Singer Inc.</b>

#### 7. Reporting of Equipment Publication Improvements

The reporting of errors, omissions, and recommendations for improving this publication by the individual user is encouraged. Reports should be submitted on DA Form 2028 (Recommended Changes to Publications) and forwarded direct to Commanding General, U.S. Army Electronics Command, ATTN: AMSEL-ME-NMP-EM, Fort Monmouth, N.J., 07703.



## SECTION II PRESCRIBED LOAD ALLOWANCE

(1) FEDERAL STOCK NUMBER	(2) DESCRIPTION	USABLE ON CODE	(3) 15-DAY ORG. MAINT. ALLOWANCE			
			(a) 1-5	(b) 6-20	(c) 21-50	(d) 51-100
	GROUP II					
5855-951-6460	KNOB-DIAL ASSEMBLY: 83273; (99592)	*	*	*		2
6220-925-7098	CAP, PANEL LIGHT: 11B; (96906)	*	*	2		2
6240-155-7836	LAW, INCANDESCENT: MS25237 327; (96906)	*	2	2		3

## SECTION II. PRESCRIBED LOAD ALLOWANCE

(1) FEDERAL STOCK NUMBER	DESCRIPTION	(3) 15-DAY ORG. INT. ALLOWANCE		
		(b)	(c)	(d)
		6-20	21-50	51-100
	GROUP III			
5850-871-5079	CAP:	*	2	2
5855-908-9318	FILTER, INFRARED: 230-002; (99592)	*	2	2
5855-908-9293	FILTER ASSEMBLY: 89037-7; (99592)	*	2	2
5855-908-9300	FILTER ASSEMBLY: 89037-5; (99592)	*	2	2
5855-908-9302	FILTER ASSEMBLY: 89037-6; (99592)	*	2	2
5855-908-6326	FILTER ASSEMBLY: 89037-3; (99592)	*	2	2
5855-908-6389	FILTER ASSEMBLY: 89037-4; (99592)	*	2	2
5855-908-6390	<b>FILTER ASSEMBLY: 89037-1; (99592)</b>			
5855-949-6143	<b>CAP, TRANSPORT, CELL: 80423; (99592)</b>			
6240-155-7836	LAMP, INCANDESCENT: MS25237-327; (96906)			



SECTION II. PRESCRIBED LOAD ALLOWANCE

(1) FEDERAL STOCK NUMBER	(2) DESCRIPTION <u>GROUP IV</u>	USABLE ON CODE	(3) 15-DAY ORG. MAINT. ALLOWANCE			
			(a)	(b)	(c)	(d)
			1-5	6-20	21-50	51-100
5920-281-0210	FUSE: F02A250V4AS;	(81349)	*	2	2	3
5920-877-9934	FUSE: F02A250V3AS;	(81349)	*	2	2	3

SECTION III REPAIR PARTS FOR ORGANIZATIONAL MAINTENANCE

(1) SMR CODE	(2) FEDERAL STOCK NUMBER	(3) DESCRIPTION	(4) UNIT OF MEAS	(5) QTY IN UNIT	(6) 15-DAY ORGANIZATIONAL MAINTENANCE ALLOW				(7) ILLUSTRATIONS	
					(a) 1-5	(b) 6-20	(c) 21-50	(d) 51-100	(a) FIG NO.	(b) ITEM NO. OR REFERENCE DESIGNATION
I-O-R 001	5850-999-1112	DETECTING SET. INFRARED AN/AAS-14A	EA	1						
I-O-P 001A		DETECTING SET. INFRARED AN/AAS-14B.	EA	1					(-12) 1-1	
I-O-R 002	5850-999-7658	CASE, TRANSIT, PREAMPLIFIER CY-4813/AAS-14A:	EA	6					(-12) A1 1-15	
I-O-R 009	5850-999-7658	CASE, TRANSIT, PREAMPLIFIER CY-4813/AAS-14A: SAME AS A02	EA	REF					(-12) A2 1-15	
I-O-R 016	5850-999-7658	CASE, TRANSIT, PREAMPLIFIER CY-4813/AAS-14A:	EA	REF					(-12) A3 14-15	
I-O-R 023	5850-999-7658	CASE, TRANSIT, PREAMPLIFIER CY-4813/AAS-14A: SAME AS A002	EA	REF					(-12) A4 1-15	
I-O-P 030	5850-999-7658	CASE, TRANSIT, PREAMPLIFIER CY-4613/AAS-14A: SAME AS A002	EA	REF					(-12) A5 1-15	
I-O-R 037	5850-999-7658	CASE, TRANSIT PREAMPLIFIER Y-4813/AAS-14A: SAME AS A002	EA	REF					(-12) A6 1-15	
I-O-R 044	5850-930-0155	CASE, TRANSIT, MAGAZINE, FILM CY-4811/U 87183	EA	2						A7 1-11
I-O-R 051	5850-930-0155	CASE, TRANSIT, MAGAZINE, FILM CY-4811/U: SAME AS A044	EA	REF					(-12) A8 1-11	
P-O-- A057A	5855-912-2285	CHECKLIST, COCKPIT: 81056;	EA	1	*	*	*	*		MP
P-O-- A057B	5855-912-2011	CHECKLIST, PREFLIGHT 85367;	EA	1	*	*	*	*		MP
P-O-R A183	5995-926-0767	CABLE ASSEMBLY, SPECIAL PURPOSE, ELECTRICAL CX-11272/AAS-14A:	EA	1	*	*	2	2	1-4	1W1
P-O-R A189	5995-926-0768	CABLE ASSEMBLY, SPECIAL PURPOSE. ELECTRICAL CX-11271/AAS-14A:	EA	1	*	*	2	2	1-4	1W2
G-O-R A195	5850-930-0156	CONTROL DETECTING SET C-6822/AAS-14A:	EA	1					1-7	1A2
P-O-- A202	5355-825-0239	K N O B : MS91528-101B; (81349)	EA	2	*	*	*	*		1A2MP3
P-O-- A203	5355-825-0239	K N O B : SAME AS A202	EA	REF						1A2MP4
P-O-- A204	5355-685-4688	K N O B : MS591528-1D1B; (81349)	EA	1	*	*	*	*		1A2MP5
P-O-- A205	5355-989-4268	K N O B : MS91528-102B; (81349)	EA	1	*	*	*	*		1A2MP6
P-O-- A207	6240-155-7836	LAMP, INCANDESCENT: M625237-327; (81349)	EA	1	2	2	6	11		1A2KS1S1
P-O-- A209	6220-944-0982	LENS, INDICATOR LIGHT 843-0332-500; (72619)	EA	1	*	*	2	2		1A2DS1MP1
P-O-- A211	6240-155-7836	LAMP, INCANDESCENT: SAME AS A207	EA	1						1A2DS2DS1
P-O-- A213	6210-926-1338	LENS, INDICATOR LIGHT 843-0333-500; (72619)	EA	1	*	*	*	*		1A2DS2MP1
P-O-- A216	6220-925-7098	CAP PANEL LIGHT (81349)	EA	1	*	*	2	2		1A2DS3MP1
P-O-- A217	6240-155-7836	LAMP, INCANDESCENT: SAME AS A207	EA	1						1A2DS3DS1
P-O-- A221	6240-155-7836	LAMP, INCANDESCENT: SAME AS A207	EA	1						1A2DS4DS1
P-O-- A225	6240-155-7836	LAMP, INCANDESCENT SAME AS A207	EA	1						1A2DS5DS1
P-O-- A229	6240-155-7836	LAMP, INCANDESCENT: SAME AS A207	EA	1						1A2DS6DS1

# SECTION III REPAIR PARTS FOR ORGANIZATIONAL MAINTENANCE (CONTINUED)

(1) SHR CODE	(2) FEDERAL STOCK NUMBER	(3) DESCRIPTION	(4) UNIT OF MEAS	(5) QTY INC IN UNIT	(6) 15-DAY ORGANIZATIONAL MAINTENANCE ALW				(7) ILLUSTRATIONS	
					(a) 1-5	(b) 6-20	(c) 21-50	(d) 51-100	(a) NO.	(b) ITEM NO. OR REFERENCE DESIGNATION
P-O-- A233	6240-155-7836	LAMP, INCANDESCENT: SAME AS A207	EA	1						1A2DS7DS1
P-O-- A273	5855-908-9298	HOOD ASSEMBLY: 81563; (99592)	EA	1	*	*	*	*		1A7
P-O-- A282	5855-921-2127	HOOD ASSEMBLY: 815 (99592)	EA	1	*	*	*	*		1A8
G-O-R A291	5850-999-7654	INDICATOR, CALIBRATION IP-807/U:	EA	1					(-12) 1-7	1A3
G-O-R A292	5850-999-7656	INDICATOR, TERRAIN DISPLAY IP-808/U:	EA	2					(-12) 1-7	1A4
G-O-R A293	5850-999-7656	INDICATOR, TERRAIN DISPLAY IP-808/U: SAME AS A292	EA	REF					(-12) 1-7	1A5
G-O-R B467	5850-930-0158	PANEL, SWITCH CONTROL SB-2649/AAS-14A:	EA	1					(-12) 1-5	1A6
P-O-- B471	5355-685-4688	GROUP: MS91528-1DLB; (81349)	EA	1	*	*	*	*		1A6MP3
P-O-- B473	6240-155-7836	LAMP, INCANDESCENT: SAME AS A207	EA	1						1A6DS1DS1
P-O-- B475	6210-926-1338	LENS, INDICATOR LIGHT: SAME AS A213	EA	1						1A6DS1MP1
P-O-- B477	6240-155-7836	LAMP, INCANDESCENT: SAME AS A207	EA	1						1A6DS2DS2
P-O-- B479	6220-944-0982	LENS, INDICATOR LIGHT: SAME AS A209	EA	1						1A6DS2MP2
P-O-- B481	6240-155-7836	LAMP, INCANDESCENT: SAME AS A207	EA	1						1A6DS3DS3
P-O-- B483	6220-944-0982	LENS, INDICATOR LIGHT: SAME AS A209	EA	1						1A6DS3MP3
P-O-- B485	6240-155-7836	LAMP, INCANDESCENT: SAME AS A207	EA	1						1A6DS4DS4
P-O-- B489	6240-155-7836	LAMP, INCANDESCENT: SAME AS A207	EA	1						1A6DS5DS5
P-O-- B491	6220-944-0982	LENS, INDICATOR LIGHT: SAME AS A209	EA	1						1A6DS5MP5
P-O-- B495	6240-155-7836	LAMP, INCANDESCENT: SAME AS A207	EA	1						1A6L5DS6
P-O-- B499	6240-155-7836	LAMP, INCANDESCENT: SAME AS A207	EA	1						1A6DS7DS7
G-O-R B548A	5850-930-0153	CONVERTER, SIGNAL DATA CV-2052/AAS-14A:	EA	1						5
G-O-R B549	5850-930-0154	MOUNTING MT-3610/AAS-14A:	EA	1					(-12) 1-16	MP1
G-O-R B560		MOUNTING MT-2530/A:	EA	1					(-12) 1-18	MP10
G-O-R B655	5850-930-0152	MOUNTING MT-3562/AAS-14A:	EA	1					(-12) 1-13	A1
G-O-R B666	5850-926-0812	POWER SUPPLY PP-4478/AAS-14A:	EA						(-12) 1-13	UNIT 4
P-O-- B823	5920-850-6091	FUSE, CARTRIDGE: FO2B250V1AS; (31349)	EA	3	2	7	4	8	(-12) 1-13	4F1
P-O-- B824	5920-850-6091	FUSE, CARTRIDGE: SAME AS B823	EA	REF					(-12) 1-13	4F2
P-O-- B825	5920-850-6091	FUSE, CARTRIDGE: SAME AS B823	EA	REF					(-12) 1-13	4FSPARE
G-O-R C116A	5850-930-0150	PREAMPLIFIER AM-4464/AAS-14A:	EA	2					(-12) 1-1	2A7

SECTION III REPAIR PARTS FOR ORGANAZATIONAL MAINTENANCE (CONTINUED)

(1) SMB CODE INDEX NO.	(2) FEDERAL STOCK NUMBER	(3) DESCRIPTION Reference Number & Mfr Code	(4) UNIT OF MEAS	(5) QTY INC IN UNIT	(6) 15-DAY ORGANIZATIONAL MAINTENANCE ALLOW				(7) ILLUSTRATIONS	
					(a) 1-5	(b) 6-20	(c) 21-50	(d) 51-100	(a) FIG NO.	(b) ITEM NO. OR REFERENCE DESIGNATION
C116B	5850-930-0150	PREAMPLIFIER AN-4464/AAS-14A: SAME AS C116A	EA	REF					(-12) 1-1	2A8
G-O-R C116C	5850-999-1113	PREAMPLIFIER AM-4467/AAS-14A:	EA	2					(-12) 6-1	2A3
G-O-R C116E			EA	REF					(-12) 6-1	2A4
G-O-R C116F	5850-999-1114	PREAMPLIFIER AM-4468/AAS-14A:	EA	2					(-12) 8-1	2A5
G-O-R C116G	5850-999-1114	PREAMPLIFIER AM-4468/AAS-14A SAME AS C116P	EA	REF					(-12) 6-1	2A6
G-O-R C116H	5850-926-0163	RECEIVER GROUP, INFRARED OA-7827/AAS-14A:	EA	1					(-12) 1-8	UNIT 2
G-O-R C116J	5850-926-0164	RECORDER GROUP, SURVEILLANCE SYSTEM AR/USA-23:	EA	1	1					UNIT 3
G-O-R C116K		RECORDER GROUP, SURVEILLANCE SYSTEM AR/USA-23A:	EA	1	2					UNIT 3
G-O-R C116L	5850-999-1115	REFRIGERATOR, CRYOGENIC RD-723/AAS-14A:	EA	1					(-12) 1-16	UNIT 6
G-O-R H411	5850-946-9638	RADIO AR/ART-41A:	EA	1					(-12) 1-18	UNIT 1

**SECTION III REPAIR PARTS FOR ORGANIZATIONAL MAINTENANCE (AN/USA-23), (AN/USA-23A)**

(1) SMR CODE INDEX NO.	(2) FEDERAL STOCK NUMBER	(3) DESCRIPTION  Reference Number	(4) UNIT OF MEAS	(5) QTY INC IN UNIT	(6) 15-DAY ORGANIZATIONAL MAINTENANCE ALV				(7) ILLUSTRATIONS	
					(a) 1-5	(b) 6-20	(c) 21-50	(d) 51-100	(a) FIG NO.	(b) ITEM NO. OR REFERENCE DESIGNATION
		GROUP 1-1								
G-O-R A291	5850-999-7650	INDICATOR, CALIBRATION IP-807/U: (99592)	EA	1						1A3
P-O-- A508	5355-556-0151	KNOB: MS91528-1D2B; (96906)	EA	2	*	*	*	*	4	1A3MP17
P-O-- A509	5355-556-0151	KNOB: SAME AS A508	EA	REF						1A3MP18
P-O-- A510	5855-951-6461	KNOB-DIAL ASSEMBLY: 83271, (99592)	EA	2	*	*	*	*	4-14	1A3A7
P-O-- A515	5855-951-6461	KNOB-DIAL ASSEMBLY: SAME AS A510	EA	REF					4-14	1A3A8
P-O-- A520	5855-951-6460	KNOB-DIAL ASSEMBLY: 83273, (99592)	EA	4	*	*	*	2	4-14	1A3A9
P-O-- A525	5855-951-6460	KNOB-DIAL ASSEMBLY: SAME AS A520	EA	REF					4-14	1A3A10
P-O-- A530	5855-951-6460	KNOB-DIAL ASSEMBLY: SAME AS A520	EA	REF					4-14	1A3A11
P-O-- A535	5855-951-6460	KNOB-DIAL ASSEMBLY: SAME AS A520	EA	REF					4-14	1A3A12
P-O-- A540B	6220-925-7098	CAP. PANEL LIGHT: 118, (96906)	EA	1	*	*	2	2		1A3DS1MP1
P-O-- A541	6240-155-7836	LAMP, INCANDESCENT: MS25237-327; (96906)	EA	1	*	2	2	3		1A3DS1DS1
P-O-- A542B	6220-925-7098	CAP. PANEL LIGHT: SAME AS A540B	EA	1						1A3DS2MP1
P-O-- A543	6240-155-7836	LAMP, INCANDESCENT SAME AS A541	EA	1						1A3DS2DS2
P-O-- A544B	6220-925-7098	CAP. PANEL LIGHT: SAME AS A540B	EA	1						1A3DS3MP1
P-O-- A545	6240-155-7836	LAMP, INCANDESCENT: SAME AS A541	EA	1						1A3DS3DS3
G-O-R A638	5950-999-7656	INDICATOR, TERRAIN DISPLAY IP-808/U: (99592)	EA	2					8-1	1A4
P-O-- A858	5355-950-1113	KNOB, DIAL ASSEMBLY: 82573-2; (99592)	EA	2	*	*	*	*	4-17	1A4MP20
P-O-- A859	5355-950-1113	KNOB, DIAL ASSEMBLY: SAME AS A858	EA	REF					4-17	1A4MP21
P-O-- A861B	6220-925-7098	CAP. PANEL LIGHT: SAME AS A540B	EA	1						1A4DS1MP1
P-O-- A862	6240-155-7836	LAMP, INCANDESCENT: SAME AS A541	EA	1						1A4DS1DS1
P-O-- A863B	6220-925-7098	CAP. PANEL LIGHT: SAME AS A540B	EA	1						1A4DS1MP1
P-O-- A864	6240-155-7836	LAMP, INCANDESCENT: SAME AS A541	EA	1						1A4DS2DS2
G-O-R B053	5850-999-7656	INDICATOR, TERRAIN DISPLAY IP-808/U: SAME AS A638	EA	1					8-1	1A5
P-O-- E840	5855-908-9297	BLANKET, HEATER: 325-012; (99592)	EA	1	*	*	*	*		3MP1
G-O-R E861	5850-930-1893	MAGAZINE, FILM MA-18/U: (99592)	EA	2					6-1 9-14	3A2
P-O-- F038	5355-685-3799	KNOB: MS91528-4N2B; (96906)	EA	1	*	*	*	*		3A27MP3
G-O-R F397	5850-930-1893	MAGAZINE, FILM MA-18/U: SAME AS E861	EA	REF					9-14	3A3
G-O-R F930	5850-930-1891	RECORDER SUBASSEMBLY MK-7186/USA-23	EA	1						3A1

## SECTION III REPAIR PARTS FOR ORGANIZATIONAL MAINTENANCE (CONTINUED)

(1) DASH INDEX NO.	(2) FEDERAL STOCK NUMBER	(3) DESCRIPTION  Reference Number & Mfr Code	USABLE ON CODE	(4) UNIT OF MEAS	(5) QTY INC IN UNIT	(6) 15-DAY ORGANIZATIONAL MAINTENANCE ALLOW				(a) FIG NO.	(7) ILLUSTRATION (L) ITEM NO. OR REFERENCE DESIGNATION
						(a) 1-5	(b) 6-20	(c) 21-50	(d) 51-100		
G-O-R F932A		RECORDER SUBASSEMBLY MK-7-96A/USA-23. (9 9 5 9 2 )	2	EA	1						3A1
P-O-- G805Y	5850-917-0512	CARD, DATA: 8 5 3 3 2 ( 9 9 5 9 2 )		EA	1						3A1A-MP10

# SECTION III PARTS FOR ORGANIZATIONAL MAINTENANCE

(2) FEDERAL STOCK NUMBER	(3) DESCRIPTION  Reference Number & Mfr Code  GROUP III  USABLE ON CODE	(4) UNIT OF MEAS	(5) QTY INC IN UNIT	(6) 15-DAY ORGANIZATIONAL MAINTENANCE ALW				(7) ILLUSTRATIONS	
				(a) Fig No.	(b) 6-20	(c) 21-50	(d) 51-100	(a) Fig No.	(b) ITEM NO. OR REFERENCE DESIGNATION
5850-940-3637	OPTICAL FILTER KIT MK898/AAS14A (This item is nonexpendable)	EA	1						
5850-999-7657	CASE, OPTICAL FILTER CY-4832/AAS-14A 84681; (99592)	EA	1						7M2
5855-908-6390	FILTER ASSEMBLY: 89037-1 (99592)	EA	2	*	*	2	2		7A1
5855-908-6390	FILTER ASSEMBLY: SAME AS B566	EA	REF						7A2
5855-908-9318	FILTER, INFRARED: 230-002; (99592)	EA	2	*	*	2	2		7A3
5855-908-6291	FILTER ASSEMBLY: SAME AS B579	EA	REF						7A4
5855-908-6326	FILTER ASSEMBLY: 89037-3; (99592)	EA	2	*	*	2	2		7A5
5855-908-6326	FILTER ASSEMBLY: SAME AS B591	EA	REF						7A6
5855-908-6389	FILTER ASSEMBLY: 89037-4 (99592)	EA	2	*	*	2	2		7A7
5855-908-6389	FILTER ASSEMBLY: SAME AS B603	EA	REF						7A8
5855-908-9300	FILTER ASSEMBLY: 89037-5; (99592)	EA	2	*	*	2	2		7A9
5855-908-9300	FILTER ASSEMBLY: SAME AS B615	EA	REF						7A10
5855-908-9301	FILTER ASSEMBLY: 89037-6; (99592)	EA	2	*	*	2	2		7A11
5855-908-9301	FILTER ASSEMBLY: SAME AS B627	EA	REF						7A12
5855-903-9293	FILTER ASSEMBLY: 89037-7; (99592)	EA	2	*	*	2	2		7A13
5855-908-9293	FILTER ASSEMBLY: SAME AS B639	EA	REF						7A14
5850-999-1113	PREAMPLIFIER AM 4467/AAS-14A (This item is nonexpendable)	EA	2						2A3
5850-871-5079	CAP: 1-3/8sc; (99017)	EA	1	*	*	2	2		2A3M1
5855-949-8143	CAP, TRANSPORT, CELL: 82423; (99592)	EA	1	*	*	2	2	7-1	2A3M1M1
5850-999-1113	PREAMPLIFIER AM-4467/AAS-14A: SAME AS C117	EA	REF						2A4
5850-999-1114	PREAMPLIFIER AM-4468/AAS-14A (This item is nonexpendable)	EA	2						2A5
5850-871-5079	CAP: SAME AS C118	EA	1					7-1	2A5M1
5855-949-8143	CAP, TRANSPORT, CELL: SAME AS C122	EA	1					7-1	2A5M1M1
5850-999-1114	PREAMPLIFIER: SAME AS	EA	REF						2A6
5850-930-0150	PREAMPLIFIER AM-4464/AAS-14A (This item is nonexpendable)	EA	2						2A7
5850-871-5079	CAP: SAME AS C118	EA	1					7-1	2A7M1
5855-949-8143	CAP, TRANSPORT, CELL: SAME AS	EA	1					7-1	2A7M1M1
5850-930-0150	PREAMPLIFIER AM464/AAS-14A: D126	EA	REF						2A8

**SECTION III REPAIR PARTS FOR ORGANIZATIONAL MAINTENANCE (CONTINUED)**

(1) SNR CODE	(2) FEDERAL STOCK NUMBER	(3) DESCRIPTION  Reference Number & Mfr Code	(4) UNIT OF MEAS	(5) QTY INC IN UNIT	(6) 15-DAY ORGANIZATIONAL MAINTENANCE ALLOW				(7) ILLUSTRATIONS	
					(a) 1-5	(b) 6-20	(c) 21-50	(d) 51-100	(a) FIG NO.	(b) ITEM NO. OR REFERENCE DESIGNATION
G-O-R D638	5850-926-0183	RECEIVER GROUP, INFRARED OA7827/AAS-14A		1						
G-O-T D639	6615-8915-1687	GYROSCOPE, DISPLACEMENT CN-770/AAS-14A (This item is nonexpendable)		1					4-1	
G-O-R D647	5850-940-8142	RECEIVER, INFRARED R1 A6/AAS-14A (This item is nonexpendable)		1						2A1
P-O-- D527	6240-155-7836	LAMP, INCANDESCENT MS25237-327; (96906)		1	*	*	2	2		2A1A;D51D51
P-O-- D512	6240-155-7636	LAMP, INCANDESCENT: SAME AS D607		1						2A1A;D52D51
G-O-R D596	5850-999-1115	REFRIGERATOR, CRYOGENIC HD-723/AAS-14A (This item is nonexpendable)		1						



SECTION III. REPAIR PARTS FOR ORGANIZATIONAL MAINTENANCE (CONTINUED)

(1) SWR OF INDEX NO.	(2) FEDERAL STOCK NUMBER	(3) DESCRIPTION  Reference Number & Mfr Code      GROUP IV	(4) UNIT OF MEAS	(5) QTY INC IN UNIT	(6) 15-DAY ORGANIZATIONAL MAINTENANCE ALLOW				(7) ILLUSTRATIONS	
					(a) 1-5	(b) 6-20	(c) 21-50	(d) 51-100	(a) FIG NO.	(b) ITEM NO. OR REFERENCE DESIGNATION
G-O- A432	5850-930-0153	CONVERTER, SIGNAL DATA CV 2052/AAS-14A (This item is nonexpendable)	ea	1					1-14	5
P-O- A721	5920-281-0210	FUSE: FO2A250V4AS; (81349)	ea	1	*	2	2	3		5P2
P-O- A722	5920-877-9934	FUSE: FOA250V3AS; (81349)	ea	1	*	2	2	3		5P1

# SECTION IV SPECIAL TOOLS, TEST & SUPPORT EQUIPMENT FOR ORGANIZATIONAL MAINTENANCE

(1) SPR CODE	(2) FEDERAL STOCK NUMBER	(3) DESCRIPTION  Reference Number & Mfr Code	(4) UNIT OF MEAS	(5) QTY INC IN UNIT	(6) 15-DAY ORGANIZATIONAL MAINTENANCE ALW				(7) ILLUSTRATIONS					
					(a) 1-5		(b) 6-20		(c) 21-50		(d) 51-100		(a) FIG NO.	(b) ITEM NO. OR REFERENCE DESIGNATION
G-P- 8930G	4940-937-3448	SERVICE KIT, REFRIGERANT MK-1016/AAS-14A	ea	1	1	1	1	1						

## SECTION V. INDEX-FEDERAL STOCK NUMBER CROSS REFERENCE TO INDEX NUMBER

FEDERAL STOCK NUMBER	INDEX NO.	FEDERAL STOCK NUMBER	INDEX NO.	FEDERAL STOCK NUMBER	INDEX NO.
GROUP I DETECTING SETS, INFRARED AN/AAS-14A AND AN/AAS-14B		6240-155-7836	A207	6240-155-7836	E607
4940-937-3448	H930GM	GROUP II RECORDER CROUP, SURVEILLANCE SYSTEMS AN/USA-23 AND AN/USA-23A		6615-892-1687	D639
5355-685-4688	A204	5355-556-0151	A508	GROUP IV CONVERTER, SIGNAL DATA CV-2052/AAS-14A	
5355-685-4688	B471	5355-685-3799	F038	<b>5850-930-0153</b>	A432
5355-825-0239	A202	5355-950-1113	<b>A858</b>	5920-281-0210	A721
5355-989-4268	A205	5850-917-0512	G805Y	5920-877-9934	<b>A722</b>
5850-926-0163	C116H	5850-930-1891	F932		
5850-926-0164	C116J	5850-930-1893	E861		
5850-926-0812	B666	5850-999-7654	A291		
5850-930-0150	C116A	5850-999-7656	A638		
5853-930-0152	B655	5855-908-9297	E840		
5850-930-0153	3548A	<b>5855-951-6460</b>	A520		
5850-930-0154	B549	<b>5855-951-6461</b>	A510		
5850-930-0155	A044	6220-925-7098	A540B		
5850-930-0156	A195	6240-155-7836	A541		
5850-930-0158	B467	GROUP III OA-7827/AAS-14A, AM-4464/AAS-14A, AM-4467/AAS-14A, AM-4468/AAS-14A HD-723/AAS-14A & MK-898/AAS-14A			
5850-946-9838	H411	5850-871-5079	C118		
5850-999-1112	A001	5850-926-0163	D638		
5850-999-1113	C116C	5850-930-0150	D126		
5850-999-1114	C116F	5850-940-8142	D647		
5850-999-1115	C116L	5850-946-9837	B560		
5850-999-7654	A291	5850-999-1113	C117		
5850-999-7656	A292	<b>5850-999-1114</b>	C667		
5850-999-7658	A002	5850-999-1115	<b>G996</b>		
5855-908-9298	A273	5850-999-7657	B562		
5855-912-2011	A057B	5855-908-6326	<b>B591</b>		
5855-912-2127	A282	<b>5855-908-6389</b>	B603		
5855-912-2285	A057A	5855-908-6390	B566		
5920-850-6091	B823	5855-908-9293	B639		
5995-926-0767	A183	5855-908-9300	B615		
5995-926-0768	A189	5855-908-9301	B627		
6210-926-1338	A213	5855-908-9318	B579		
6220-925-7098	A216	<b>5855-949-8143</b>	c122		
6220-944-0982	A209				

# SECTION VI. INDEX-FIGURE AND ITEM NUMBER CROSS REFERENCE TO INDEX NUMBER

FIG. NO.	ITEM NO. OR REFERENCE DESIGNATION	INDEX NO.	FIG. NO.	ITEM NO. OR REFERENCE DESIGNATION	INDEX NO.
	GROUP I DETECTING SETS, INFRARED AN/AAS-14A AND AN/AAS-14B			1A3A9 1A3A10 1A3A11 1A3A12	A520 A525 A530 A535
(-12) 1-1	2A7 2A8	C116A C116B	14-17	1A4MP20 1A4MP21	A858 A859
(-12) 1-5	146	B467		GROUP III OA-7827/AAS-14A, AM-4464/AAS-14A, AM-4467/AAS-14A; AM-4468/AAS-14A; HD-723/AAS-14A AND MK-898/AAS-14A	
(-12) 1-7	1A3 1A4 1As	A291 A292 A293	4-1	2A2	D639
(-12) 1-8	2	C116H	7-1	2A3MT1MP1 2A5MP1 2A5MT1MP1 2A7MP1 2A7MP1MP1	C122 C668 C672 D127 D131
(-12) 1-11	A7 A8	A044 A051		GROUP IV CONVERTER, SIGNAL DATA CV-2052/AAS-14A	
(-12) 1-13	4 4F1 4F2 4F SPARE A1	B666 B823 B824 B825 B655	1-14	5 5F1 5F2	A432 A722 A721
(-12) 1-15	A1 A2 A3 A4 A5 A6	A002 A009 A016 A323 A030 A037			
(-12) 1-16	6 MP1	C116L B549			
(-12) 1-18	1 MP10	H411 B560			
(-12) 6-1	2A3 2A4 2A5 2A6	C116C C116E C116F C116G			
1-4	1W1 1W2	A183 A189			
1-7	1A2	A195			
	GROUP II RECORDER GROUP, SURVEILLANCE SYSTEMS AN/USA-23 AND AN/USA-23A				
7-1	1A3	A291			
8-1	1A4 1A5	A638 B053			
9-14	3A2 3A3	E861 E397			
14-14	1A3MP17 1A3MP18 1A3A7 1A3A8	A508 A509 A510 A515			

## SECTION VII INDEX REFERENCE DESIGNATION CROSS REFERENCE TO INDEX NUMBER

REFERENCE DESIGNATION	INDEX NO.	REFERENCE DESIGNATION	INDEX NO.	REFERENCE DESIGNATION	INDEX
<b>GROUP I</b>					
DETECTING SETS, INFRARED AN/AAS-14A AND AN/AAS-14B					
1	H411	<b>2A4</b>	C116H	<b>1A3A7</b>	A510
1A2	A195	<b>2A5</b>	c116c	1A3A8	A515
1A2DS1MP1	A209	2A6	C116E	1A3A9	A520
1A2DS2DS1	A211	2A7	C116F	1A3A10	A525
1A2DS2MP1	A213	2A8	C116G	1A3A11	A530
1A2DS3DS1	A217		C116A	1A3A12	A535
1A2DS3MP1	A216		C116B	1A4	A638
1A2DS4DS1	A221		C11&J, C116K	1A4DS1DS1	A862
1A2DS5DS1	A225	4F1	8666	1A4DS1MP1	A861B
1A2DS6DS1	A.229	4F2	B823	1A4DS1MP1	A863B
1A2DS7DS1	A233	4F SPARE	B824	1A4DS2DS2	A864
1A2KS1DS1	A207		B825	1A4MP20	A858
1A2MP3	A202	6	B548A	1A4MP21	A859
1A2MP4	A203	<b>A1</b>	C116L	1A5	B053
1A2MP5	A204	<b>A2</b>	A002, B655	3MP1	E840
1A2MP6	A205	A3	A309	3A1	F932, <b>F932A</b>
1A3	A291	A4	A316	3A1A4MP18	G805Y
1A4	A292	<b>A5</b>	A023	3A2	E861
1A5	A293	A6	A030	3A2A7MP3	F038
1A6	<b>B467</b>	A7	A037	3A3	F397
1A6DS1DS1	B473	A8	A044	GROUP III	
1A6DS1MP1	B475	MP	A051	OA-7827/AAS-14A, AM-4464/AAS-14A, AM-4467/AAS-14A, AM-4468/AAS-14A; HD-723/AAS-14A and MK-898/AAS-14A	
1A6DS2DS2	B477	MP1	A057A, A057B	2A1	D647
1A6DS2MP2	B479	MP10	<b>B560</b>	2A1A9A5DS1DS1	E607
1A6DS3DS3	B481	GROUP II			
1A6DS3MP3	B483	RECORDER GROUP, SURVEILLANCE SYSTEMS AN/USA-23 AND AN/USA-23A			
1A6DS4DS4	<b>B485</b>	1A3	A291	2A1A945DS2DS1	E612
1A6DS5DS5	B489	1A3DSADS1	A541	2A2	D639
1A5DS5MP5	B491	1A3DS1MP1	A540B	2A3	C117
1A6DS6DS6	B495	1A3DS2DS2	A543	2A3MP1	C118
1A6DS7DS7	B499	2ADS3MP1	A542B	2A3MT1MP1	C122
1A6MP3	B471	1A3DS3DS3	A545	<b>2A4</b>	C392
1A7	A273	1A3DS3MP1	<b>A544B</b>	2A5	c667
1A8	A282	1A3MP17	<b>A508</b>	2A5MP1	C668
1W1	A183	1A3MP18	<b>A509</b>	2A5MT1MP1	C672
1W2	A189			2A6	C896
				2A7	D126
				2A7MP1	D127

SECTION VII. INDEX-REFERENCE DESIGNATION CROSS REFERENCE  
TO INDEX NUMBER (CONTINUED)

REFERENCE DESIGNATION	NO.	REFERENCE DESIGNATION	INDEX NO.	REFERENCE DESIGNATION	INDEX NO.
247MT1MP1		D131			
2A8		D382			
7A1		B566			
7A2		B573			
7A3		B579			
7A4		B585			
7A5		<b>B591</b>			
7A6		<b>B597</b>			
7A7		B603			
7A8		B09			
<b>7A9</b>		<b>B615</b>			
7A10		B621			
7A11		B627			
7A112		B633			
7A13		B639			
7A14		B645			
7MP2		B562			
GROUP IV CONVERTER, SIGNAL DATA CV-2052/AAS-14A					
5		A432			
5F1		A722			
5F2		A721			

# By Order of the Secretary of the Army

## Official:

KENNETH G. WICKHAM,  
Major General, United States Army,  
The Adjutant General.

**W. C. WESTMORELAND,**  
***General, United States Army,***  
**Chief of Staff.**

Distribution:

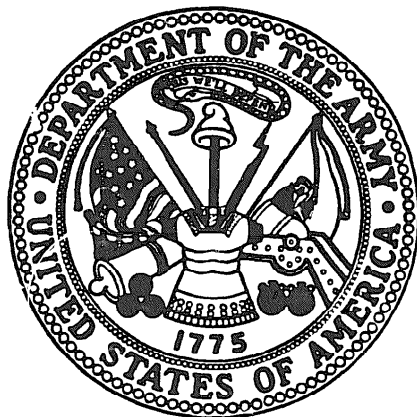
To be distributed in accordance with DA Form 12-36 (qty rqr block no. 59) Organizational Maintenance requirements for OV-1C aircraft.

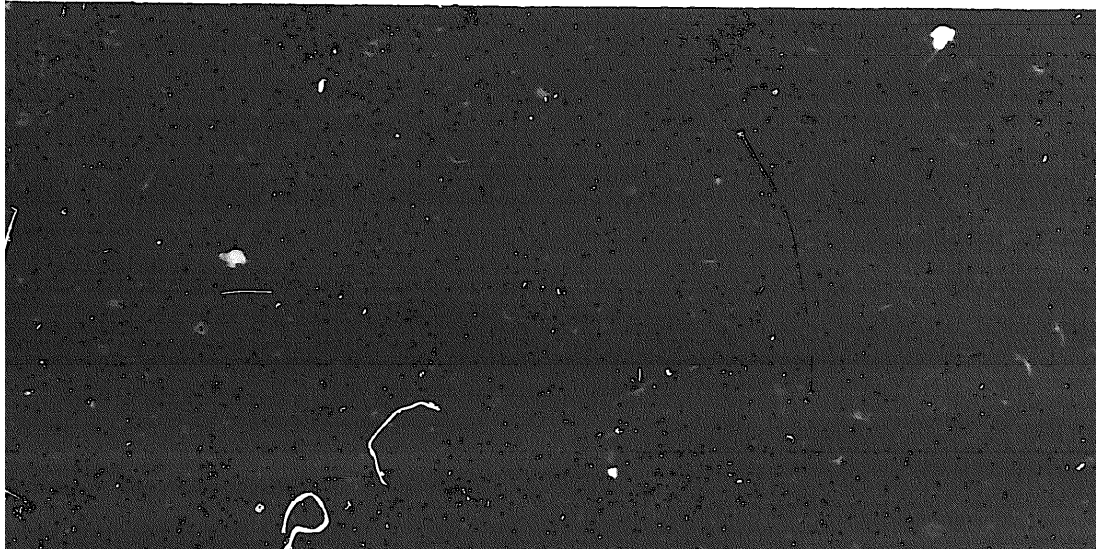


**END**

**12 - 03 - 82**

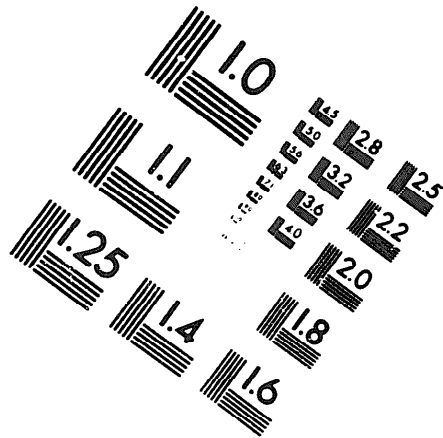
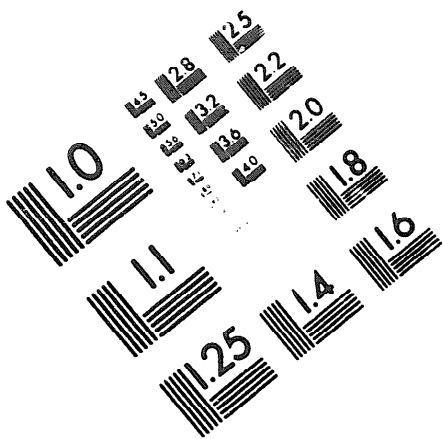
**DATE**





DEPARTMENT OF THE ARMY

MICROFORM  
TEST TARGET



150 MM

1.0 mm (e= 0.1 mm)

ABCDEFGHIJKLMNQRSTUUVWXYZ1234567890  
abcdefghijklmnopqrstuvwxyz\$%&/'%# 1/2 1/4 3/4 —=+ x&@\*

1.5 mm (e= 1.09 mm)

ABCDEFGHIJKLMNQRSTUUVWXYZ1234567890  
abcdefghijklmnopqrstuvwxyz\$%&/'%# 1/2 1/4 3/4 —=+ x&@\*

2.0 mm (e= 1.37 mm)

ABCDEFGHIJKLMNQRSTUUVWXYZ  
abcdefghijklmnopqrstuvwxyz  
1234567890\$%&/'%# 1/2 1/4 3/4 —=+ x&@\*

2.5 mm (e= 1.77 mm)

ABCDEFGHIJKLMNQRSTUUVWXYZ  
abcdefghijklmnopqrstuvwxyz  
1234567890\$%&/'%# 1/2 1/4 3/4 —=+ x&@\*

1.0 mm (e= 0.1 mm)

ABCDEFGHIJKLMNQRSTUUVWXYZ1234567890  
abcdefghijklmnopqrstuvwxyz\$%&/'%# 1/2 1/4 3/4 —=+ x&@\*

1.5 mm (e= 1.09 mm)

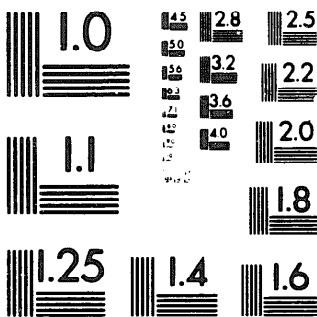
ABCDEFGHIJKLMNQRSTUUVWXYZ1234567890  
abcdefghijklmnopqrstuvwxyz\$%&/'%# 1/2 1/4 3/4 —=+ x&@\*

2.0 mm (e= 1.37 mm)

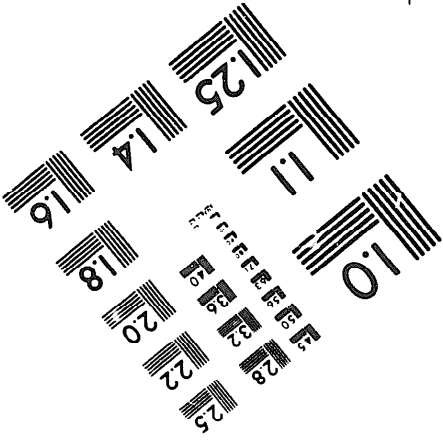
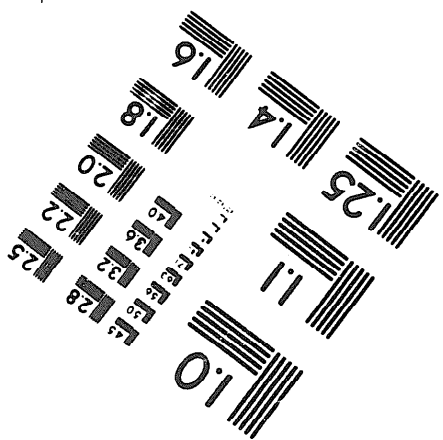
ABCDEFGHIJKLMNQRSTUUVWXYZ  
abcdefghijklmnopqrstuvwxyz  
1234567890\$%&/'%# 1/2 1/4 3/4 —=+ x&@\*

2.5 mm (e= 1.77 mm)

ABCDEFGHIJKLMNQRSTUUVWXYZ  
abcdefghijklmnopqrstuvwxyz  
1234567890\$%&/'%# 1/2 1/4 3/4 —=+ x&@\*



200 MM



250 MM